

If you know someone who struggles to access the newsletter, please let us know so we can help them.

Well winter has definitely arrived with more cold weather due in the next couple of weeks so please make sure you have a good supply of gloves and hats at the ready as we still like the children to have as much outdoor play time as possible. Although it may seem like a distant memory now, we hope you all had a relaxing break and an enjoyable new year. If you are joining in the de-cluttering frenzy this month, please consider donating any unwanted gifts to us for our Christmas Fayre this year or any old bikes, scooters or wheeled toys to our OPAL provision. Your donations really make a difference.

Our very sad news as we started a new term, was that our beloved Mrs. Bartholomew is leaving us in the summer to take early retirement. This will be a huge loss for our amazing school as she has been here for 9 years and has transformed the school into what it is today. We will miss her greatly but will look forward to hearing all about her adventures when she comes to visit us. The governing body has started the process of finding her successor and we will keep you all updated.

Unfortunately, we have had a lot of children arriving late so far this term which has a real impact on their learning as they are missing key phonics and reading sessions. If you are having any problems getting your children in to school on time, please contact Mrs. May-Erskine or Ms. Larue who can support and work with you to help.



Attendance for the Month of January

EYFS	80.9%	Year 4	92.1%
Year 1	92.9%	Year 5	93.4.1%
Year 2	93.7%	Year 6	93.4%
Year 3	93.9%	Whole School	91.7%

Well done year 3!

To report your child's absence, please contact the school by 8:30 am.

You can phone the main office on 01255 502444, use your 'My Child at School' app or the school website.

If you are struggling with attendance or punctuality, please contact Mrs. May-Erskine or Ms. Larue who will be able to support you.



Mayflower House Points

Beach Hut



8755

Pier



8474

Lighthouse



8507

Port



8285



Monthly Assemblies



We have had some meaningful discussions in our assemblies this month. Ask your child to tell you about the stories behind our assembly pictures and how they link to our British Values.



**NO
OUT
SIDERS**
'All different, All welcome'



Harwich Town Station Garden



Harwich Town Station Garden, featuring a beautiful area designed and nurtured by The Mayflower Primary School, has been short listed for the 'Most Enhanced Railway Spaces Award' at the Community Rail Awards 2026!

The winners will be announced on March 19th 2026.

This is a fantastic achievement and a real credit to the creativity, care and teamwork of everyone involved.

Well done Mayflower!

Can you spot Mrs. Bartholomew, Mrs Chopping and Mrs Newberry in the photograph?



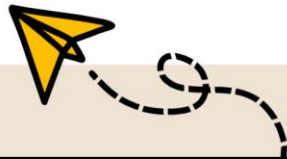
12th February 2026
8:45am - 10:30am

Maths Morning

Come along and find out how to support your child in Maths!
Join your child for maths activities in their class!

Free breakfast provided

Limited spaces available - book on MCAS by 9am 5th February



Diary Dates



12 th February:	Maths Morning – 8:45-10:30 Free Breakfast included
16 th February:	Half Term
23 rd February:	Back to School
26 th February:	Group School Photographs
5 th March:	World Book Day
10 th March:	Parents Evening
11 th March:	Parents Evening
16 th March:	Mother's Day Afternoon Tea
17 th March:	Mother's Day Breakfast
18 th March:	Mother's Day Afternoon Tea
30 th March:	Easter Holiday
13 th April:	Back to School - First Day of Summer Term




February half-term childcare based at St Michael's

When school's out but work isn't, having familiar childcare in place can make half-term much easier to manage.

This February half-term, Holiday HQ begins at St. Michael's, delivered by Junior Adventures Group, offering structured, active holiday childcare for children aged 4-11 with activities adapted across age groups.

Holiday HQ: Destination Imagination





This February's theme, Destination Imagination, invites children to step into imaginative roles each day — from **underwater explorers and creative engineers to sports stars and intelligence agents** — through hands-on activities, team challenges and creative play.

 **Monday 16 – Friday 20 February (from 7.30am to 6pm or anywhere in between)**

Session Timings & Costs:

- **Short Day: 9.30am - 3.30pm - £30**
- **Early Drop Off: 8.30am - 9.30am - £4**
- **Late Collection: 3.30pm - 5.30pm - £8**

As with all Holiday HQ camps, each day includes

-  Themed Hero Activities
-  Make & Take creative workshops
-  Skill Zone teamwork challenges
-  Sports and active games



What parents can continue to expect

- 👤 Ofsted-registered childcare with familiar, DBS-checked staff
- 🕒 Reliable holiday cover you can plan around
- 📅 48-hour cancellation if plans change
- 🇪🇺 Tax-Free Childcare accepted, where eligible

Ways families can save on February half-term

👨👩 Sibling discount

An **extra 10%** off automatically applied when booking more than one child

+ Multi-day discount

Book **4+ days** in the same week and receive an **additional 4%** off, automatically applied at checkout

All eligible discounts are combined automatically at checkout, helping families get the best available price.

Less stress for you. Themed fun for them.

Your feedback is vital in helping us understand demand and shape a holiday camp provision that best supports families within the school community.

Please take a few minutes to share your views — your responses will directly inform whether this holiday provision can be introduced.

<https://www.surveymonkey.com/r/StMichaelsCofEPrimary>

😊 Have any questions?

☎ 0333 577 1533

✉ hello@junioradventuresgroup.co.uk



Respite Care

for Children with Additional Needs!



The Ark Centre • 36 Main Road, CO123LU

Ages 2 Years to 7 Years

No formal diagnosis needed!

£15 per child

Drinks & Snacks Included

- Bring a Pack Up! -

Saturday 31st January

Saturday 7th February

Saturday 28th February

9:30AM - 2:30PM



To Book: Call Jessie on
01255 502063 or Email
nursery@thearkcentregroup.co.uk



GYMNASTICS AND DANCE ACADEMY

Enrolling now!

- ✓ CLASSES IN DANCE & GYMNASTICS
- ✓ 6 DAYS A WEEK
- ✓ AGES 1-16 | BEGINNERS WELCOME
- ✓ QUALIFIED & EXPERIENCED COACHES
- ✓ TRUSTED BY LOCAL FAMILIES
- ✓ PURPOSE BUILT FACILITIES

Book your January trial online

 www.gymnasticsanddanceacademy.uk

 Lawford/Manningtree CO11 2LH



- PRESCHOOL • RECREATIONAL • IMPROVER • SQUAD • PRIVATE LESSONS
- JUST FOR FUN • EXAMS • PERFORMANCES • EVENTS • COMPETITIONS